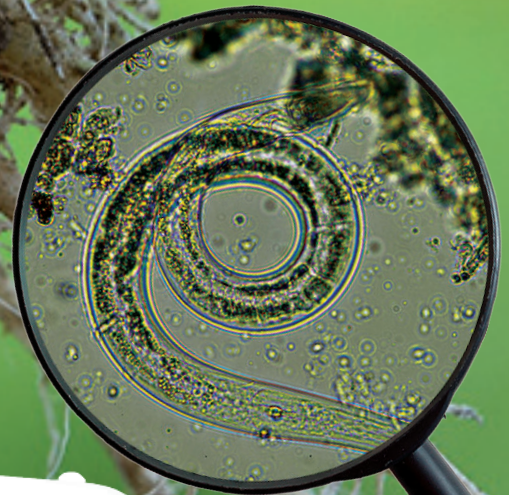




THE INNOVATIVE AND EFFECTIVE BIONEMATICIDE

The natural and effective solution for better nematode management



Easy to use

Preventive & curative

No PHI & No MRL

Broadspectrum



MAJESTENE® SC

BIONEMATICIDE

ROSE

MAJESTENE® SC

BIONEMATICIDE

REGISTERED CROPS



MAJESTENE® SC is an innovative bionematicide composed of a selected strain of the bacterium *Burkholderia rinojensis*. **MAJESTENE® SC** inhibits egg hatching and cyst formation, it also prevents the moulting of juveniles into adults.

ADVANTAGES

- Equal or even superior effectiveness to the reference treatment
- Double action of the product: in the soil and on the roots.
- Preventive and curative action of the product
- Majestene activity in the roots remains for at least 7 days
- Can be used in conventional and organic agriculture
- No impact on beneficials
- No phytotoxicity for plants
- Safe for users
- No maximum residue limits (MRL), benefit for export crops.
- Can be applied several times, including at planting and during the season. No PHI

BENEFITS



Quality
Up to 68% gall reduction



Even plant growth
56% increase in plant vigor



Performance
Preventive and curative



Natural
No MRL

CROPS	PESTS	DOSAGE	APPLICATION & FREQUENCY	PRE-HARVEST INTERVAL (J)	RE-ENTRY INTERVAL
Roses	Nematodes (Meloidogyne javanica)	12.5 Litre/ hectare 4Litre/20Litres of water	<ul style="list-style-type: none"> • Apply to soil as a drench using 2 Litres of water per m² prior to planting. • 2 applications per season at an interval of 14 days 	0	24h
Cucumber	Root-knot nematodes	9.5L/ha or 4L/20L of water	3 applications per season at an interval of 14 days		
Zucchini					

*For details and precautions, refer to the label.
Wear gloves and mask when handling the product. Do not leave within reach of children.

COMPOSITION

Heat-killed *Burkholderia* 396 Cells
and spent fermentation media (94,46%)

PACKAGING

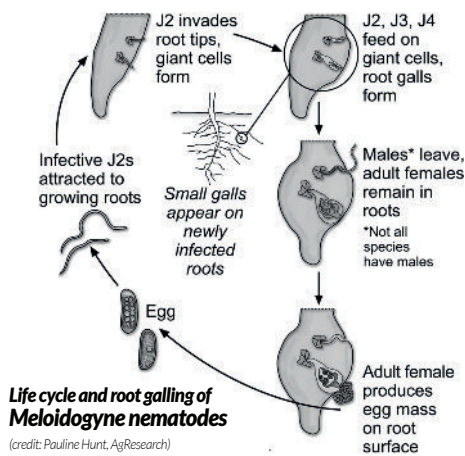
10L bottle
Formulation : **SC (Suspension Concentrate)**



MORE INFORMATION

MAJESTENE® SC

acts on all stages of nematodes



MAJESTENE® SC

acts outside the roots but also inside

In the soil

The nematode get in contact with **MAJESTENE®SC**



The nematode stop moving after **24 hours** and dies **48-72h** after the treatment.

At the root level

MAJESTENE®SC is absorbed by the roots and has a repulsive effect on most nematodes.



If the nematode enters the root, it cannot complete its life cycle and dies. No new galls are formed.

NOTES

